

JAVS Barcode Scanner

User Manual



Introduction..... 1

Installation..... 1

Barcode Scanner Configuration 4

Advanced Settings 5

User Guide 6

USB COM Port Setting 7

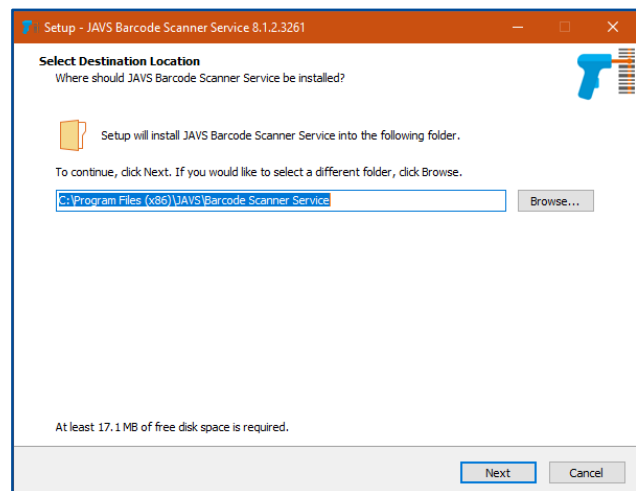
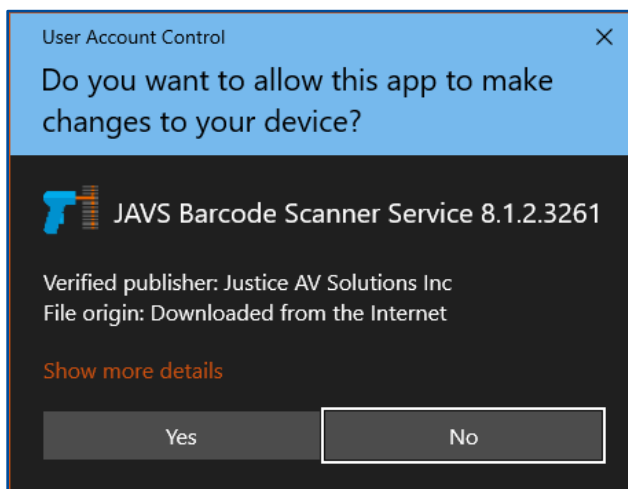
INTRODUCTION

The JAVS Barcode Scanner is designed to work with JAVS Recorder 8 to start, pause, and resume recordings with the use of barcode session numbers. Any session can be stopped by scanning the provided Stop Current Session barcode. (See User Guide).

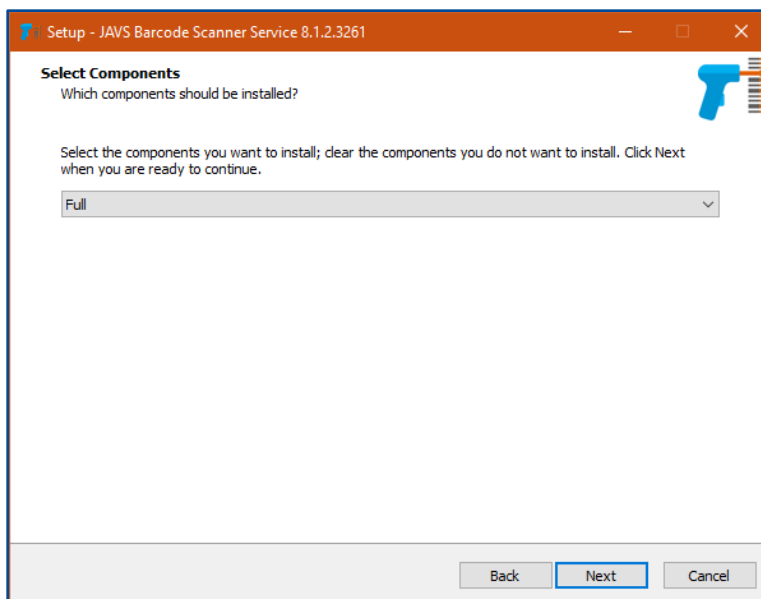
The JAVS Barcode Scanner is not designed to take the place of AutoLog 8 and you **must** have the AutoLog 8 application open at all times. AutoLog 8 is the only way the JAVS system can communicate important system messages, i.e. record status, session name, or which mode (like Private/Public) the system is in.

INSTALLATION

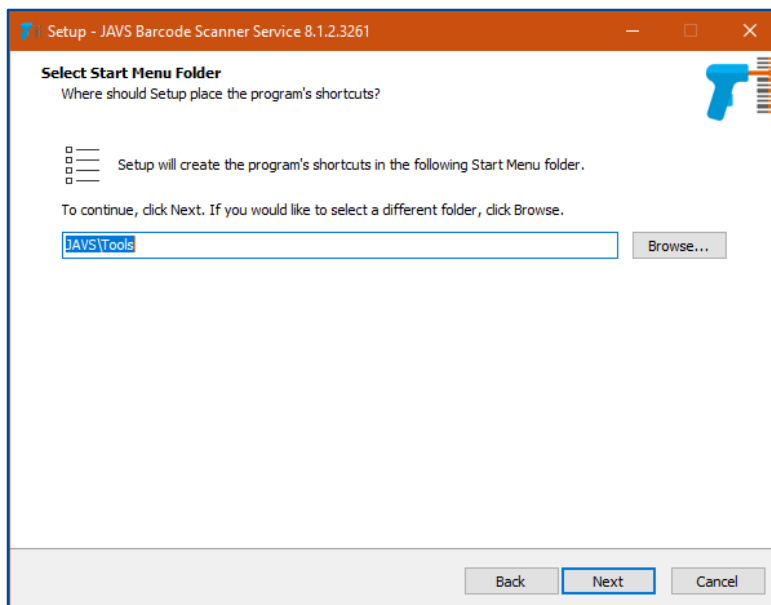
1. Connect the barcode scanner to one of the AutoLog computer's USB ports.
2. Download the appropriate Suite 8 Barcode Scanner Service for your current Suite 8 level.
3. Launch the file and the JAVS Barcode Scanner Service Setup Wizard will open.
 - Note: Unless you have been instructed by an IT staff professional, you will not need to change any settings while installing this software. Simply click **Next** for each stage of the install.
4. First, the User Account Control window will open. Select **Yes** to continue.
5. Click **Next** to select the default location the folder the JAVS Barcode Scanner to be downloaded to OR click **Browse** to choose a different location on your computer.



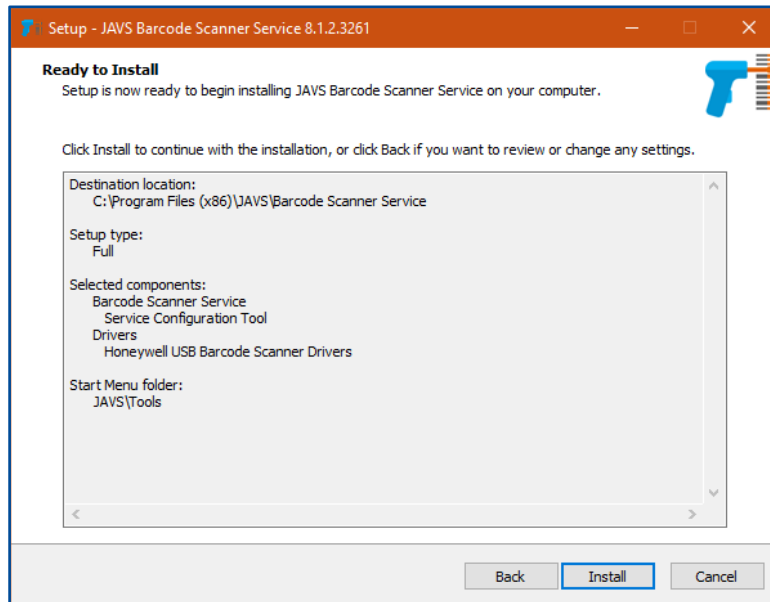
6. The Select Components window will open. Use the drop-down menu to choose between a **Full** or **Custom** installation, then click **Next** to continue.



7. The Select Start Menu Folder screen will appear. If you wish to change the location, click the **Browse** button to select a new location. When finished, click **Next**.



8. The Ready to Install window will open. This page gives you a summary of your installation. If you need to change any settings, use the **Back** button. If you are sure of your installation choices, press the **Install** button.



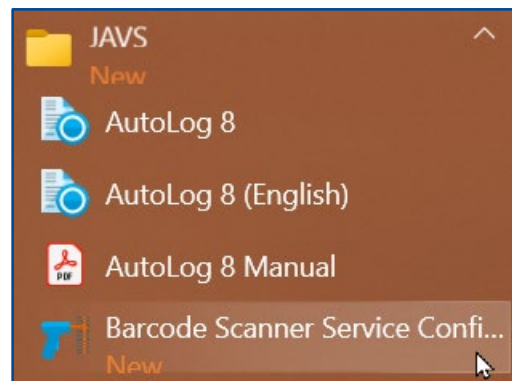
9. The Installing screen will appear with a progress bar. Once finished, the page will automatically change to the Finish page.
10. Click **Finish** and the JAVS Barcode Scanner has been installed. It is recommended that you restart your computer.

BARCODE SCANNER CONFIGURATION

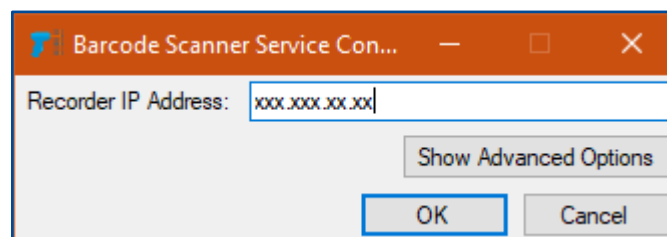
1. After restarting your computer, scan the barcode below (labeled USB COM PORT EMULATION). You **cannot** continue with the setup until this barcode is scanned.



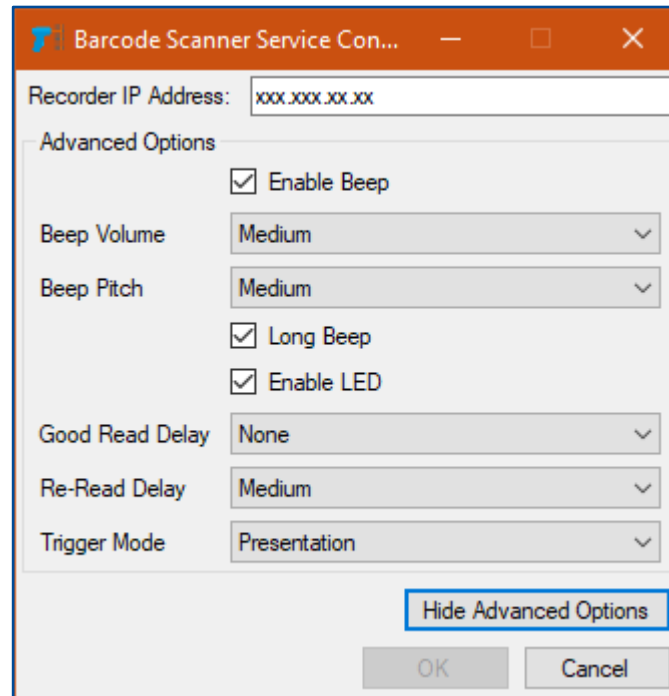
2. Click your computer's **Start** button and navigate to the programs downloaded onto your computer. Select **JAVS** > **Barcode Scanner Service Configuration**.



3. The Barcode Scanner Service configuration will open. Set the IP Address for your Primary Recorder, then select **OK** to close the window.
4. If you wish to adjust the settings, click the Show Advanced Options button. Once finished with the settings, click **OK**. (See [Advanced Settings](#))



The following are the JAVS default settings and should not need to be changed.



- **Enable Beep:** If checked, an audible tone will be heard when scanning.
- **Beep Volume:** Sets the audible volume of the beep.
- **Beep Pitch:** Sets the pitch of the beep.
- **Long Beep:** When checked, enable a longer beep.
- **Enable LED:** When checked, enables the LED scanner.
- **Good Read Delay:** Sets the minimum amount of time before the scanner can read another barcode.
- **Re-read Delay:** Sets the time the scanner can read the same barcode for a second time.
- **Trigger Mode:** The scanner can be operated manually or by serial commands.
- **Manual:** The scanner continues to scan until a barcode is read or the trigger is released.
- **Presentation:** Uses ambient light to detect barcodes. When the ambient light changes in the scanner's view, the LEDs will turn on to read the code.
- **Automatic:** The scanner scans continuously using intern LEDs to detect barcodes.

Using the JAVS Barcode Scanner is a very easy process.

1. Scan the barcode given by your Case Management System with the scanner.
 - Scan by manually hitting the trigger or by leaving it in the stand that is included with the scanner and placing a barcode under it.
2. Once the scanner has acknowledged the scan, the system will go into record.
 - If you scan the same barcode again, it will put the system into pause. Scanning the barcode a third time will resume that case.
 - If you scan a new barcode, it will stop that recording and start a new one.
 - The Session ID will be pulled from the case name given inside of the barcode.

If you wish to start and stop a generic session, you can scan the barcodes provided below. Scanning the Start Generic Session barcode will start a new, blank session. Scanning the Stop Generic Session barcode will end that new session.

Start a New Session



Stop the Current Session



USB COM PORT EMULATION



~ T E R M I D 1 3 0 . 3